



DUBAI TOUR 2016

February

			km
3th	<i>Wednesday</i>	1 ^a stage DUBAI SILICON OASIS STAGE (Dubai - Fujairah)	173
4th	<i>Thursday</i>	2 ^a stage NAKHEEL STAGE (Dubai - Palm Jumeirah)	183
5th	<i>Friday</i>	3 ^a stage THE WESTIN STAGE (Dubai-Hatta Dam)	172
6th	<i>Saturday</i>	4 ^a stage BUSINESS BAY STAGE (Dubai - Dubai)	137

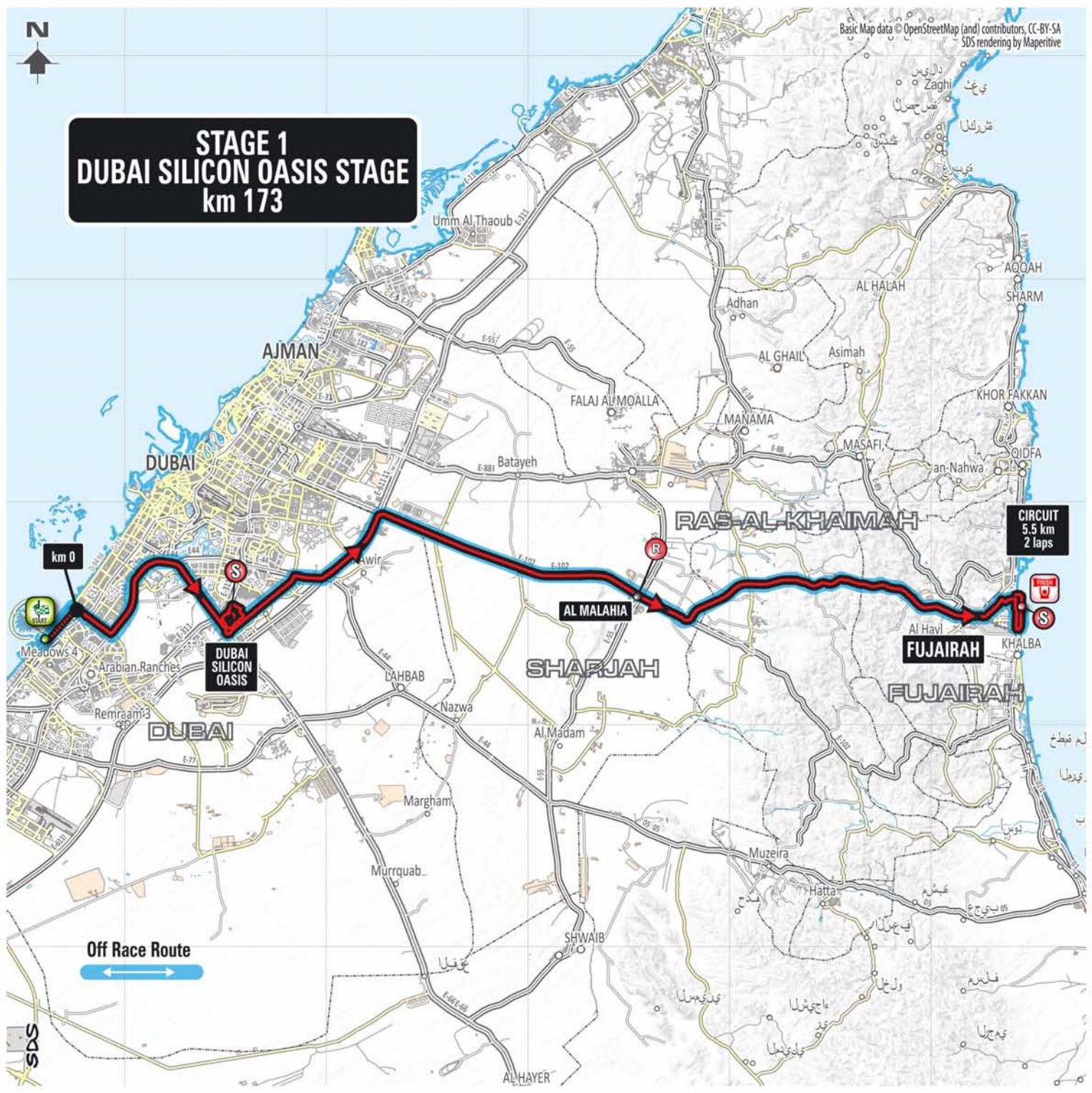
Total km	665
average length km	166.3

3 *sprint stages*
1 *hilly stage*

Basic Map data © OpenStreetMap (and) contributors, CC-BY-SA
SDS rendering by Maperitive



STAGE 1 DUBAI SILICON OASIS STAGE km 173



CIRCUIT
5.5 km
2 laps

Off Race Route

SDS



Stage
1
itinerary

THE FIRST STAGE
(Dubai - Fujairah)
WEDNESDAY 2016.02.03

km 173

Elevation			Distance			timetable			
			leg	run	to be run	km / h			
40 42 44									
DUBAI									
2	DUBAI	↑	km 0 - Umm Suqeim Rd-D63	0.0	0.0	173.0	11.00	11.00	11.00
8	Exit to Al Khail Rd	↔		5.9	5.9	167.1	11.09	11.09	11.09
3	Exit to E66	↔		11.6	17.5	155.5	11.25	11.24	11.23
30	Silicon Oasis Entrance	↔		15.7	33.2	139.8	11.51	11.48	11.46
TV	22 Silicon Oasis	↑		5.6	38.8	134.2	11.59	11.56	11.53
30	Silicon Oasis Exit	↔	Academic Rd-D54	6.9	45.7	127.3	12.10	12.06	12.03
40	Exit to Al Awir Rd	↔	Al Awir Rd	9.2	54.9	118.1	12.25	12.21	12.17
78	Exit to Emirates Rd	↔	ramp-Emirates Rd	3.6	58.5	114.5	12.30	12.26	12.22
SHARJAH									
53	Exit to Sharjah-Kalba Rd	↔	ramp-E102	11.4	69.9	103.1	12.47	12.42	12.37
R	148 Al Malaiha Interchange	↑	E102	34.6	104.5	68.5	13.43	13.35	13.28
178	Exit to E84	↔	ramp-E84	6.0	110.5	62.5	13.53	13.44	13.36
RAS-AL-KHAIMAH									
150	Interchange	↑	E84	18.5	129.0	44.0	14.19	14.09	14.00
FUJAIRAH									
36	Fujairah	↑	Mohammad Bin Mater Rd	23.2	152.2	20.8	14.52	14.41	14.31
12	Fujairah Fort	↑	Kuwait Rd	2.2	154.4	18.6	14.55	14.44	14.34
6	Final Circuit Entrance	↔	Corniche Rd	2.8	157.2	15.8	14.59	14.48	14.37
TV	2 FUJAIRAH	↑	Corniche Rd	4.8	162.0	11.0	15.05	14.54	14.43
2	FUJAIRAH	↑	Corniche Rd	5.5	167.5	5.5	15.13	15.01	14.50
2	FUJAIRAH	↑	Corniche Rd	5.5	173.0	0.0	15.20	15.08	14.56

NOTE:



Intermediate sprint:

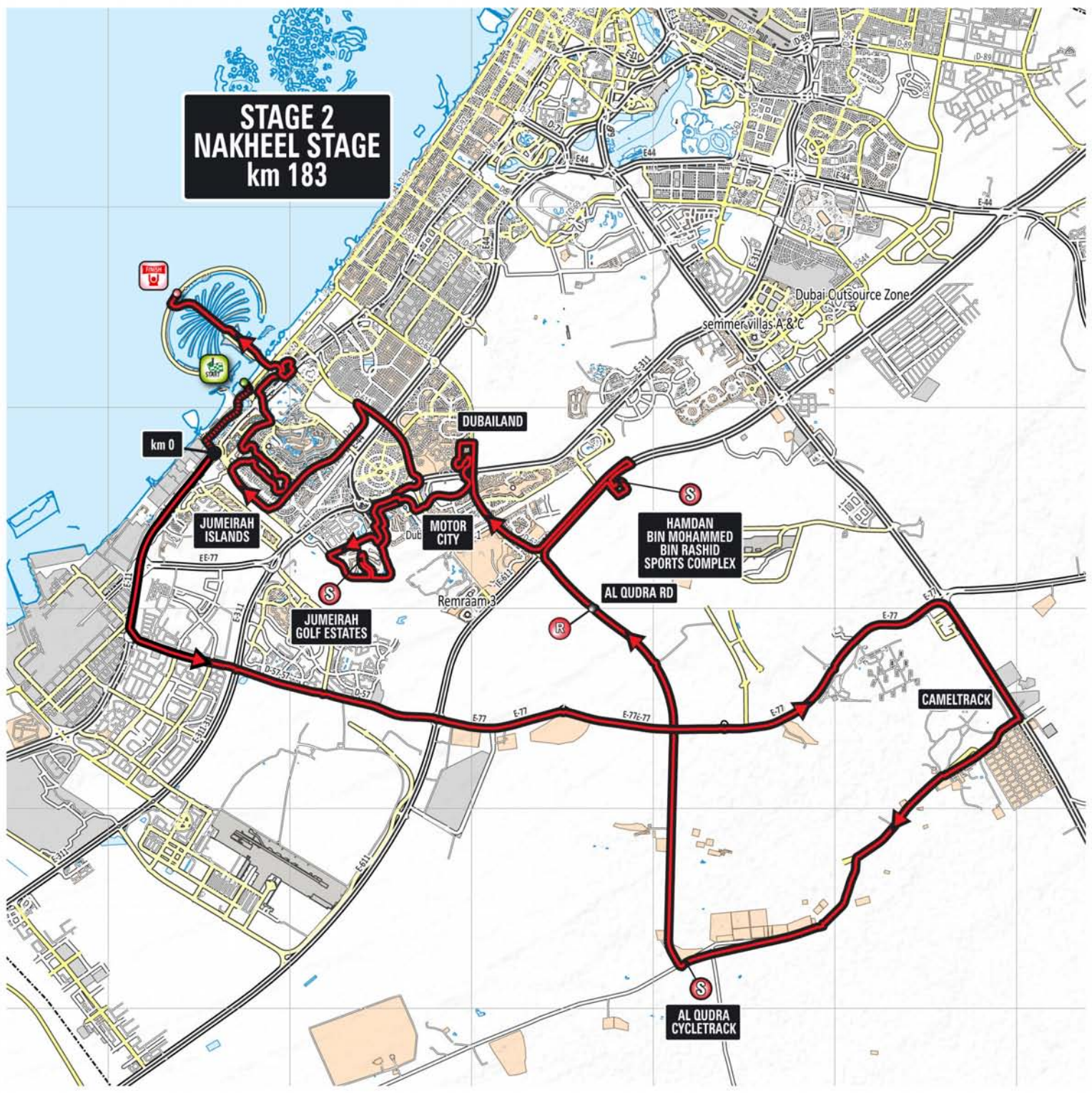
km 38.8 Silicon Oasis

km 162 FUJAIRAH



Rifornimento/Feed zone: km 101 - 104 Al Malaiha Interchange - E102

**STAGE 2
NAKHEEL STAGE
km 183**



km 0

JUMEIRAH ISLANDS

JUMEIRAH GOLF ESTATES

DUBAILAND

MOTOR CITY

HAMDAN BIN MOHAMMED BIN RASHID SPORTS COMPLEX

AL QUDRA RD

CAMELTRACK

AL QUDRA CYCLETRACK

Dubai Outsource Zone
Semmervillas A & C

Remraam 3

EE-77

D-57

D-57

D-57

D-57

D-57

D-57

D-57

D-57

D-57

D-57

D-57

D-57

D-57

D-57

D-57

E-77

E-77

E-77

E-77

E-77

E-77

E-77

E-77

E-77

E-77

E-77

E-77

E-77

E-77

E-77

E-77

E-77

E-77

E-77

E-77

E-77

E-77

E-77

E-77

E-77

E-77

E-77

E-77

E-77

E-77

E-77

E-77

E-77

E-77

E-77

E-77

E-77

E-77

E-77

E-77

E-77

E-77

E-77

E-77

E-77

E-77

E-77

E-77

E-77

E-77

E-77

E-77

E-77

E-77

E-77

E-77

E-77

E-77

E-77

E-77

E-77

E-77

E-77

E-77

E-77

E-77

E-77

E-77

E-77

E-77

E-77

E-77

E-77

E-77

E-77

E-77

E-77

E-77

E-77

E-77

E-77

E-77

E-77

E-77

E-77

E-77

E-77

E-77

E-77

E-77

E-77

E-77

E-77

E-77

E-77

E-77

E-77

E-77

E-77

E-77

E-77

E-77

E-77

E-77

E-77

E-77

E-77

E-77

E-77

E-77

E-77

E-77

E-77

E-77

E-77

E-77

E-77

E-77

E-77

E-77

E-77

E-77

E-77

E-77

E-77

E-77

E-77

E-77

E-77

E-77

E-77

E-77

E-77

E-77

E-77

E-77

E-77

E-77

E-77

E-77

E-77

E-77

E-77

E-77

E-77

E-77

E-77

E-77

E-77

E-77

E-77

E-77

E-77

E-77

E-77

E-77

E-77

E-77

E-77

E-77

E-77

E-77

E-77

E-77

E-77

E-77

E-77

E-77

E-77

E-77

E-77

E-77

E-77

E-77

E-77

E-77

E-77

E-77

E-77

E-77

E-77

E-77

E-77

E-77

E-77

E-77

E-77

E-77

E-77

E-77

E-77

E-77

E-77

E-77

E-77

E-77

E-77

E-77

E-77

E-77

E-77

E-77

E-77

E-77

E-77

E-77

E-77

E-77

E-77

E-77

E-77

E-77

E-77

E-77

E-77

E-77

E-77

E-77

E-77

E-77

E-77

E-77

E-77

E-77

E-77

E-77

E-77

E-77

E-77

E-77

E-77

E-77

E-77

E-77

E-77

E-77

E-77

E-77

E-77

E-77

E-77

E-77

E-77

E-77

E-77

E-77

E-77

E-77

E-77

E-77

E-77

E-77

E-77

E-77

E-77

E-77

E-77

E-77

E-77

E-77

E-77

E-77

E-77

E-77

E-77

E-77

E-77

E-77

E-77

E-77

E-77

E-77



Stage
2
itinerary

NAKHEEL STAGE (Dubai - Palm Jumeirah)

km 183

THURSDAY 2016.02.04

Elevation			Distance			timetable			
			leg	run	to be run	km / h			
DUBAI									
5	DUBAI	↑ km 0	0.0	0.0	183.0	10.45	10.45	10.45	
5	Sheikh Zayed Rd	↑ Ibn Battuta Entrance	2.6	2.6	180.4	10.49	10.49	10.48	
8	Exit to D57	↔ ramp-D57	5.2	7.8	175.2	10.57	10.56	10.56	
32	Crossroad Emirates Rd	↑ D57-E77	16.2	24.0	159.0	11.23	11.21	11.20	
84	E66 Interchange	↔ ramp-E66	25.3	49.3	133.7	12.05	12.01	11.57	
116	Camel Track	↔ Exit to Al Lisaili-Al Qudra	6.9	56.2	126.8	12.16	12.11	12.07	
S	81	Al Qudra Cycletrack	↔	21.0	77.2	105.8	12.47	12.41	12.35
R	25	Exit to Emirates Rd	↔ ramp-Emirates Rd	21.6	98.8	84.2	13.18	13.10	13.04
S	33	Hamdan Bin Mohammed Bin Rashid Sport Complex	↑	6.7	105.5	77.5	13.29	13.21	13.14
	33	Emirates Rd U Turn	↔ Emirates Rd	1.9	107.4	75.6	13.32	13.23	13.16
	27	Exit to Al Qudra Rd	↔ Al Qudra Rd	5.6	113.0	70.0	13.40	13.31	13.23
	20	Exit to Dubailand	↔	7.0	120.0	63.0	13.50	13.41	13.33
	20	Dubailand	↔ D63-Turin Blvd Rd	2.2	122.2	60.8	13.53	13.44	13.36
	29	Motor City	↑ Turin Blvd Rd	3.5	125.7	57.3	13.59	13.49	13.41
	21	Dubai Sports City	↔	2.9	128.6	54.4	14.03	13.53	13.45
	16	Jumeirah Golf Estate Entrance	↔	3.2	131.8	51.2	14.08	13.58	13.49
S	31	Jumeirah Golf Estate	↑ U-Turn	6.1	137.9	45.1	14.17	14.07	13.57
	15	Jumeirah Golf Estate Exit	↔	4.1	142.0	41.0	14.23	14.12	14.03
	21	Dubai Sport City	↔ Sh. Mohammed Bin Zayed Rd-Hess	3.2	145.2	37.8	14.28	14.17	14.07
	2	Jebel Ali Race Course	↔ Al Asayel St	6.3	151.5	31.5	14.37	14.25	14.15
	2	Jumeirah Islands Entrance	↔	10.3	161.8	21.2	14.51	14.39	14.28
	2	Jumeirah Islands Exit	↔	6.5	168.3	14.7	14.59	14.47	14.36
	2	Dubai Media City	↔	4.0	172.3	10.7	15.05	14.52	14.41
	4	Exit to Palm Jumeirah	↔	3.0	175.3	7.7	15.09	14.57	14.45
	2	Palm Jumeirah Tunnel	↑	5.9	181.2	1.8	15.17	15.04	14.52
	2	PALM JUMEIRAH	↑ Atlantis	1.8	183.0	0.0	15.20	15.07	14.55

NOTE:



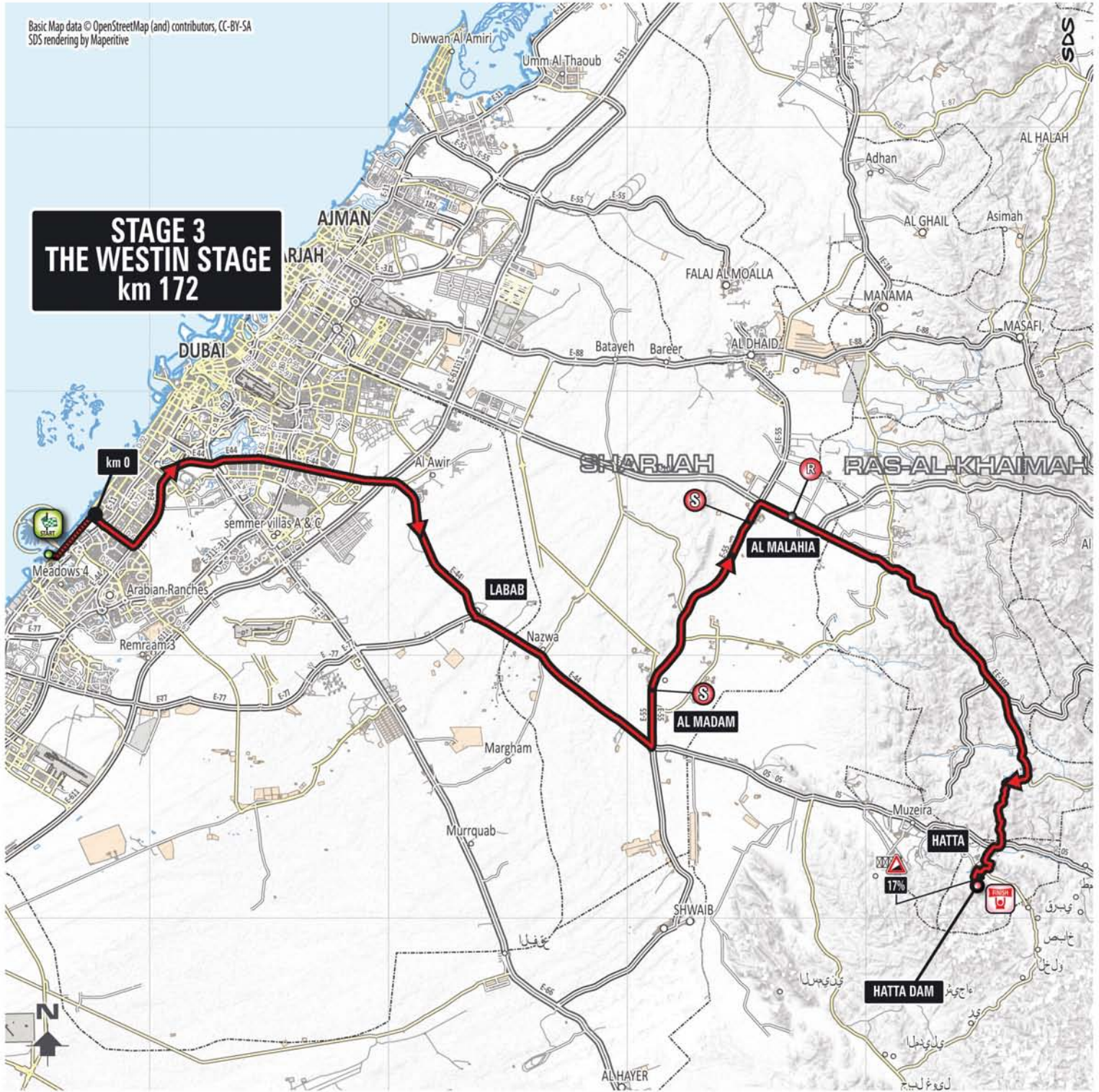
Intermediate sprint:

km 77.2 Al Qudra Cycletrack

km 105.5 Hamdan Bin Mohammed Bin Rashid Sport Complex

km 137.9 Jumeirah Golf Estates

STAGE 3 THE WESTIN STAGE km 172





Stage

3

itinerary

**THE WESTIN STAGE
(Dubai - Hatta Dam)**

km 172

FRIDAY 2016.02.05

Elevation			Distance			timetable			
			leg	run	to be run	km / h			
DUBAI									
2	DUBAI	↑	km 0 - Umm Suqeim Rd-D63	0.0	0.0	172.0	11.05	11.05	11.05
5	Exit to Al Khail Rd	↔	ramp-Al Khail Rd	5.6	5.6	166.4	11.14	11.13	11.13
5	E66 Interchange	↑	E44-Ras al Khor Rd	14.1	19.7	152.3	11.33	11.32	11.31
7	D62 Interchange	↑	E44-Al Awir Rd	5.7	25.4	146.6	11.43	11.41	11.39
76	Emirates rd Interchange	↑	E44-Al Awir Rd	12.8	38.2	133.8	12.04	12.01	11.58
116	Labhab	↑	E44-Madam Rd	18.4	56.6	115.4	12.34	12.30	12.26
SHARJAH									
192	Al Madam Square	↔	E55	23.5	80.1	91.9	13.13	13.07	13.01
S	175 Al Madam	↑	E55	7.0	87.1	84.9	13.24	13.17	13.10
S R	150 Al Malaiha	↔	ramp-E102 Sharjah-Kalba Rd	22.7	109.8	62.2	13.57	13.49	13.41
181	E84 Interchange	↑	E102 Sharjah-Kalba Rd	6.3	116.1	55.9	14.08	13.58	13.50
RAS-AL-KHAIMAH									
288	Shawka	↑	E102	9.6	125.7	46.3	14.23	14.13	14.04
260	Munay	↔	ramp-Hatta Rd	18.9	144.6	27.4	14.49	14.38	14.28
221	Huwaylat	↔	Hatta Rd	9.2	153.8	18.2	15.02	14.50	14.39
DUBAI									
304	Hatta Fort	↔	E44	11.3	165.1	6.9	15.19	15.07	14.55
330	Hatta	↔	Hatta Hill park	1.8	166.9	5.1	15.22	15.09	14.58
402	HATTA	↑	Hatta Dam	5.1	172.0	0.0	15.29	15.17	15.05

NOTE:



Intermediate sprint:

km 87.1 Al Madam

km 109.8 Al Malaiha



Feed zone: km 114 - 117 Al Malaiha - ramp-E102 Sharjah-Kalba Rd

**STAGE 4
BUSINESS BAY STAGE
km 137**





Stage
4
itinerary

BUSINESS BAY STAGE
(Dubai - Dubai)
SATURDAY 2016.02.06

km 137

Elevation			Distance			timetable		
			leg	run	to be run	km / h		
43 45 47								
DUBAI								
2	DUBAI	↑ km 0 - Umm Suqeim Rd-D63	0.0	0.0	137.0	12.10	12.10	12.10
5	Exit to 318th St	↩ 318th St -D72	3.9	3.9	133.1	12.16	12.15	12.15
5	Al Waha St	↩ 26th St	6.8	10.7	126.3	12.25	12.24	12.23
2	Exit to D69	↩ Al Meydan St-D69	2.7	13.4	123.6	12.28	12.28	12.27
5	Meydan Racecourse	↑	0	6.3	117.3	12.38	12.37	12.36
4	Nad al Sheba Rd	↩	0	3.2	114.1	12.43	12.41	12.40
10	Entrance E66	↩ E66-exit to D67 Manama Rd	4.4	27.3	109.7	12.50	12.48	12.46
5	Nad al Hamar Rd	↩	0	6.3	103.4	12.59	12.56	12.54
2	Al Rebat St Interchange	↩ Al Rebat St	5.1	38.7	98.3	13.06	13.03	13.01
30	Mushrif Park	↑	0	9.1	89.2	13.19	13.16	13.13
27	Mushrif Park Exit	↩ Al Khawaneej Rd-D89-D54	3.5	51.3	85.7	13.24	13.21	13.18
30	D97	↩	0	6.0	79.7	13.33	13.29	13.26
20	Sh. Mohammed Bin Zayed Rd Interchange	↑ D97	5.5	62.8	74.2	13.41	13.36	13.33
3	E11 Interchange	↑ D95-D82	7.3	70.1	66.9	13.50	13.46	13.41
3	Al Mamzar	↩ Alexandria St-U-Turn	3.7	73.8	63.2	13.55	13.50	13.46
S	2 Al Mamzar Beach Park	↩ D92	4.7	78.5	58.5	14.01	13.56	13.52
3	Al Khaleej Rd	↩ Baniyas Rd	2.5	81.0	56.0	14.05	14.00	13.55
2	Deira	↩ Al Ras	6.4	87.4	49.6	14.14	14.08	14.03
2	Al Maktoum Bridge	↩	0	3.5	46.1	14.18	14.13	14.07
6	Mankhool Rd	↩ 19th st	3.4	94.3	42.7	14.23	14.17	14.12
5	Al Fahidi Fort	↩ 11th St	1.1	95.4	41.6	14.25	14.19	14.13
2	Al Ghubaiba	↩ D92-U-Turn-D92	1.3	96.7	40.3	14.27	14.20	14.15
3	Jumeirah Rd	↩	0	3.9	36.4	14.32	14.26	14.20
S	2 Union Flag	↩	0	1.7	102.3	34.7	14.35	14.28
2	Burj-Al-Arab	↩ U-Turn-Jumeirah Rd	14.1	116.4	20.6	14.53	14.46	14.39
2	Al Urouba St	↩ D92-D71	9.9	126.3	10.7	15.07	14.59	14.51
3	312th Rd	↩	0	3.8	6.9	15.12	15.04	14.56
3	Emirates Towers	↩ 312th st	2.2	132.3	4.7	15.15	15.07	14.59
2	Tunnel	↑ Al Sa'ada St	2.0	134.3	2.7	15.18	15.09	15.01
2	Burj Khalifa Blvd	↩	0	1.5	1.2	15.20	15.11	15.03
2	DUBAI	↑ Al A'amal St	1.2	137.0	0.0	15.21	15.13	15.05

NOTE:



Intermediate sprint:

km 78.5 Al Mamzar Beach Park

km 102.3 Union Flag